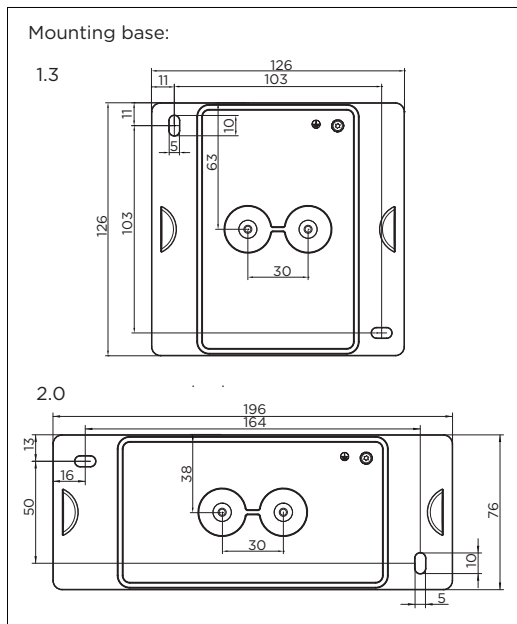


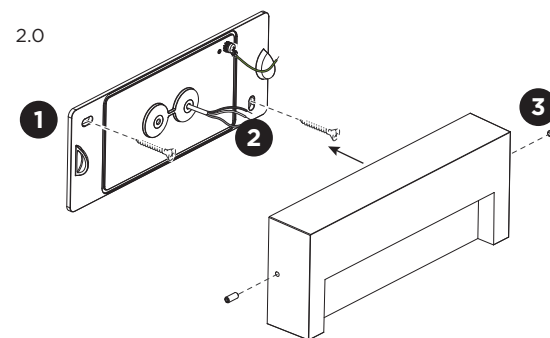
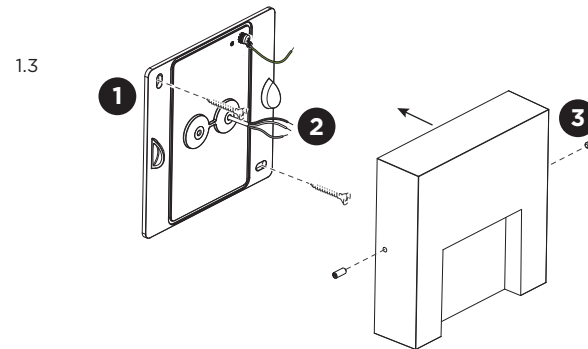
RETO wall surface

INSTALLATION INSTRUCTIONS | OCTOBER 2022

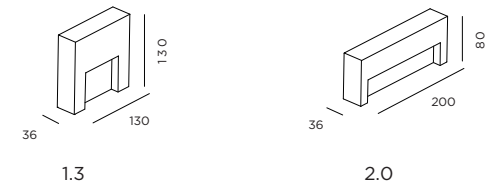


Please use a matching grommet based on the used 220-240V cable and the corresponding type in the overview table.

	A	B	C
CABLE			
TYPE	ROUND H05RN-F H07RN8-F H07RN-F	ROUND H05RN-F	ROUND
OUTSIDE Ø	min 6.8mm max 8.9mm	min 5mm max 6.8mm	min 1.5mm max 2.6mm
CONDUCTION SECTION	2or3x 0.75mm ² 2or3x 1.0mm ² 2or3x 1.5mm ²	2or3x 0.75mm ² 2x 1.0mm ²	0.75mm ² 1.5mm ²



DIMENSIONS



MOUNTING INSTRUCTION

- 1 Remove the mounting base from the luminaire by loosening the socket screws and mount it on the wall with screws (screws are not included).

2 POWER CONNECTION

Connect to 220-240V.

Connect the earth cable.

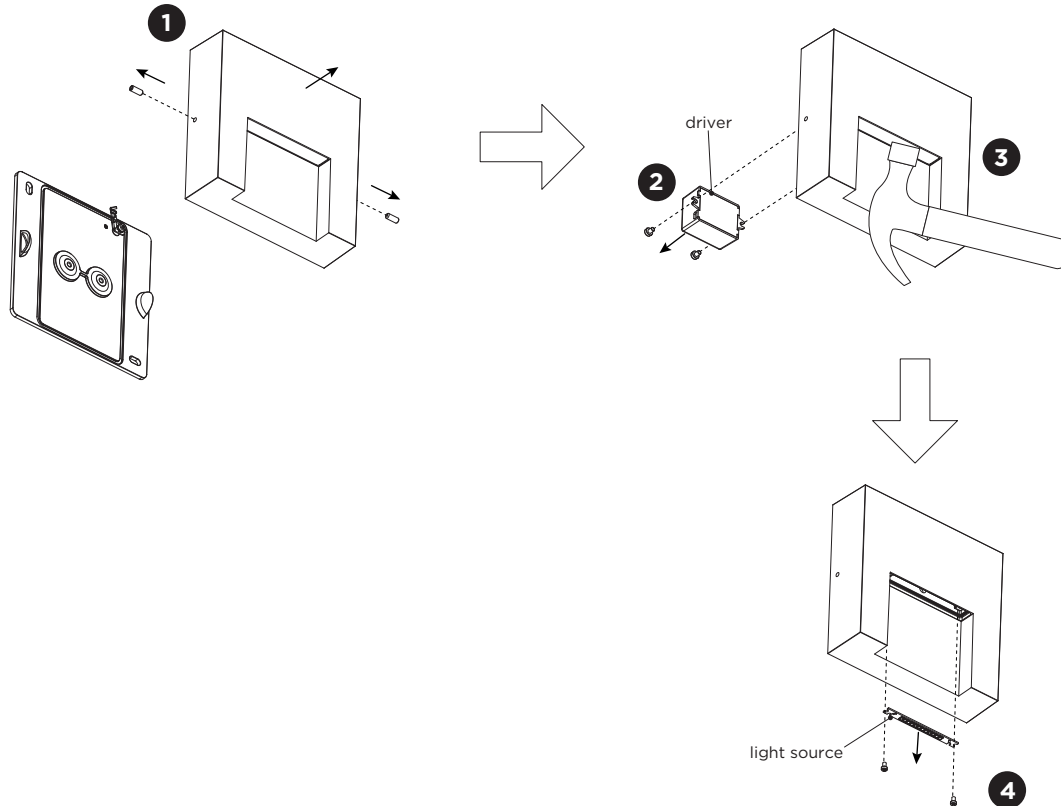


- 3 Fix the luminaire on the base with the socket screws.

PB19-010-813-00_v0

RETO wall surface

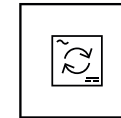
INSTALLATION INSTRUCTIONS | OCTOBER 2022



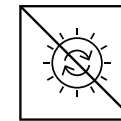
DISMOUNTING INSTRUCTION

Light source & driver

- 1** Loosen the side screws and disconnect the wires to remove the lamp housing from the mounting base.
- 2** Loosen the screws and disconnect the wires to remove the driver.
- 3** Break the glass.
- 4** Unscrew the light source, disconnect the wires and remove the light source.



The driver can be replaced by the end user.



The light source is not replaceable.



This luminaire contains a light source with the energy class E.