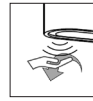


AURA PENDANT

Design: Nital Patel



*This product cannot be controlled by external trailing-edge dimmer



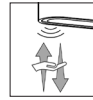
○ = ⏻

ON / OFF
swipe your hand under the sensor



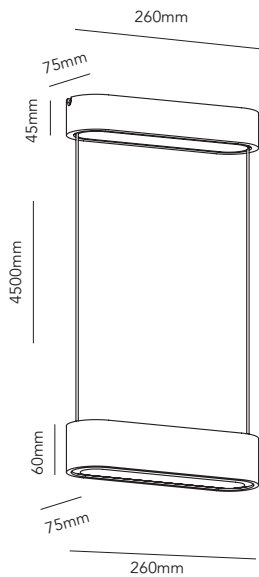
* = ☀

DIMM
hold your hand still under the sensor to adjust the light lev



2700K * = * 5000K

TUNABLE WHITE / TO WARM
move your hand up to / away from the sensor and hold your hand still to set the color temperature



AURA PENDANT L260

AURA PENDANT - 2700-5000K

Design: Nital Patel

LIGHT·POINT
C O P E N H A G E N

ART. NAME	AURA PENDANT L260		
Art. no. rose gold	270470	-	-
Art. no. titanium	270471	-	-
EAN rose gold	5711389704704		
EAN titanium	5711389704711		
Material	Aluminium/glass	-	-
Light source	COB	-	-
Lifetime	50.000h	-	-
Number of light sources	2	-	-
Electronical gear	N/A	-	-
Driver watt	20W	-	-
Light source watt	10	-	-
System watt	20	-	-
Voltage	220-240V	-	-
Dimmable	Yes	-	-
Lumen output	1200	-	-
Lumen pr. watt	60	-	-
Flux	N/A	-	-
CCT (K)	2700-5000	-	-
RA/CRI	>90	-	-
Mac Adam	3	-	-
Light distribution	Up+Down	-	-
Beam angle	N/A	-	-
Tilt angle	N/A	-	-
Cutout mm.	N/A	-	-
Rotation	N/A	-	-
Looping	N/A	-	-