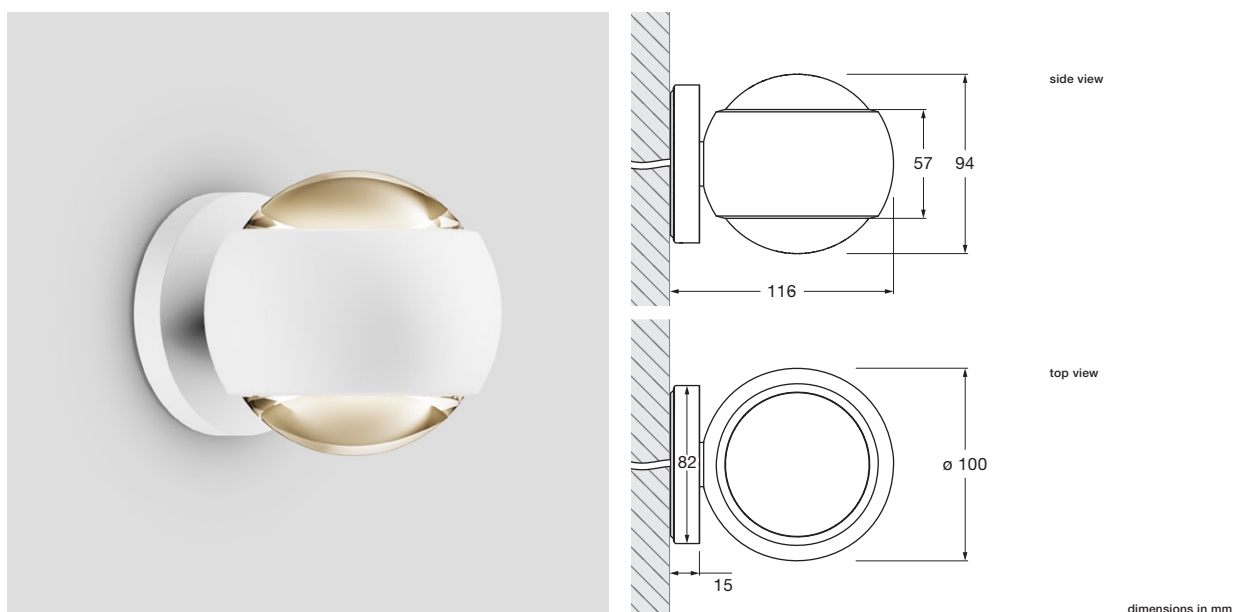


io verticale VOLT datasheet

LED wall spotlight with double-sided light output, spherical head and lens optics. The light is freely rotatable (with stop), the lighting effects can be changed at any time through optional inserts using a simple mechanism, dichroic colour filter can be additionally inserted. Surface combinations can be configured.

Version for mounting on plaster surfaces; connection to 230V AC / 50 Hz mains voltage; power 18W (13W version chrome, rose gold, bronze), dimmable via trailing-edge phase-cut dimmer*. The VOLT light engine is replaceable.

Other versions: io alto v, io giro, io giro doppio, io piano, io piano v



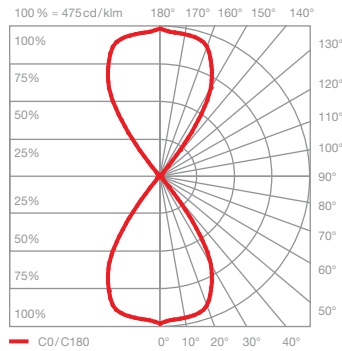
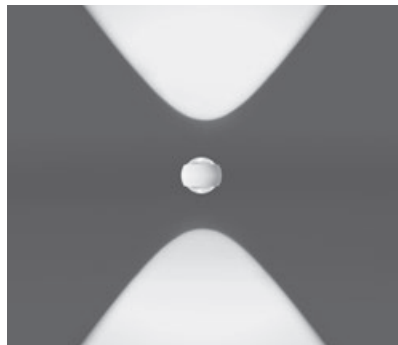
technical data io verticale VOLT

properties	material	aluminium, chrome-plated, painted, anodised or PVC-coated, plastic, glass, optical plastic
	turning range head	360° (with stop)
	weight	1.0 kg
surface	head	matt gold (cover matt white or matt black), rose gold (cover matt black), bronze (cover schwarz matt), shiny chrome, weiß matt, schwarz matt
VOLT light engine	average life time	> 40.000 hrs
	energy efficiency class	A
	power	18 W (13 W version shiny chrome, rose gold, bronze)
	color rendering index	perfect color; CRI Ra 97
	color temperature	2700, 3000 K
	recommended use	residential and commercial
electricity	dimming	via trailing-edge phasecut dimmer*
	connection	230V AC
	permitted operating conditions	max. 30°C for indoor use only

* For a list of compatible dimmers, see www.occhio.de/dim_en, trailing-edge phasecut dimmer



io verticale VOLT lighting effects

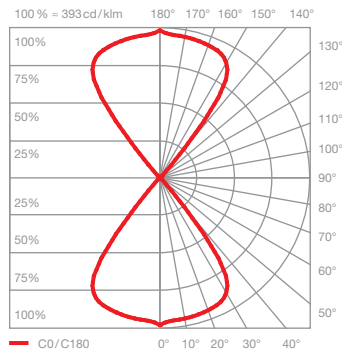
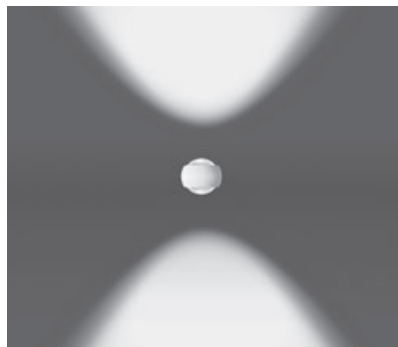


io verticale D
directed light with contour beam angle
(approx. 80°)*

inserts: lens

luminous flux: perfect color 18 W 760 lm
perfect color 13 W 570 lm

*without aperture

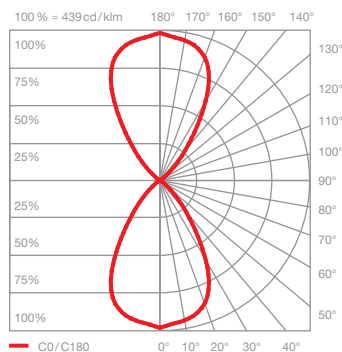
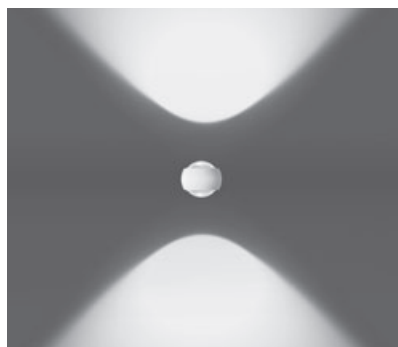


io verticale D with soft edge glass
directed light with soft contour beam angle
(approx. 80°)

inserts: lens
soft edge glass**

luminous flux: perfect color 18 W 670 lm
perfect color 13 W 500 lm

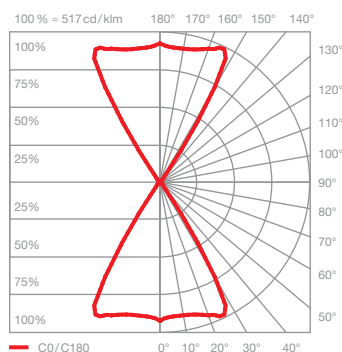
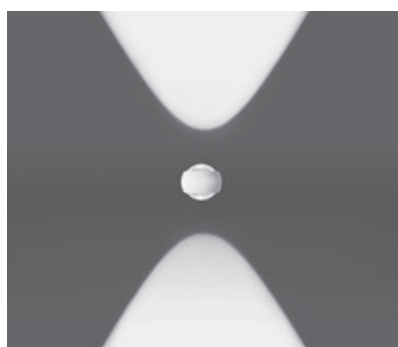
** Included in the scope of delivery



io verticale D with satinised glass
directed light with soft contour beam angle
(approx. 100°)

inserts: lens
satinised glass

luminous flux: perfect color 18 W 590 lm
perfect color 13 W 440 lm



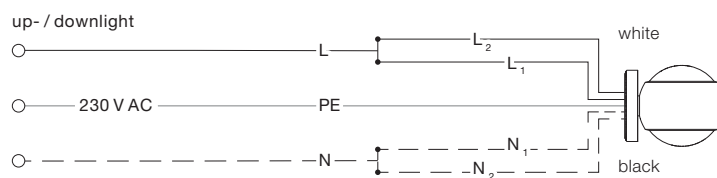
io verticale D with fresnel lens
bundled light
beam angle approx. 60°

inserts: lens
fresnel lens

luminous flux: perfect color 18 W 650 lm
perfect color 13 W 480 lm

connection diagram

up / downlight simultaneously



up / downlight individually

Flush-mounted or hollow ceiling box necessary.

