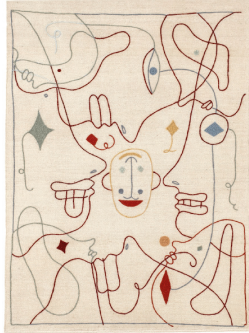


nanimarquina

Silhouette

Design by Jaime Hayon



200x300
6'7" x 9'10"



170x240
5'7" x 7'10"



120x150
3'11" x 4'11"



Can be dry-cleaned

Se puede lavar en seco

Fiber **100% Hand spun Afghan wool**

+ **New Zealand embroidery wool**

Technique **Hand loomed**

Type **Kilim**

Density **156,000 knots/m²**

Total height **4 mm**

Weight **2.1 kg/m²**

Fibra **100% Lana afgana hilada a mano +**

Bordado de Lana de Nueva Zelanda

Técnica **Hand loomed**

Tipo **Kilim**

Densidad **156,000 nudos/m²**

Altura total **4 mm**

Peso **2,1 kg/m²**



Tapestry model 120x150 does not include wall mounting kit.

Modelo Tapiz 120x150 no incluye kit de fijación a la pared.



This collection can be made in special sizes, subject to maintaining the original proportions of the standard size. Ask for terms and conditions of delivery.

Esta colección puede hacerse en medidas especiales respetando las proporciones originales del tamaño estándar. Consultar condiciones y plazos de entrega.



Certifications

This rug meets the ASTM E648 Class I and CFR 16 Part 1630/1631 flammability requirements for floors. And CAL PROP 65 assuring rug free of harmful substances.