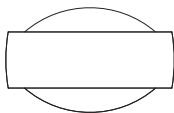


Occhio

Sento head double-sided

Mounting instructions



Assembling the head (inserts)



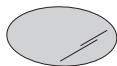
Diffusor glass



Color filter
(optional)

head

Color filter
(optional)



Diffusor glass



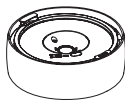
Version A



Lens



soft edge glass,
satinised glass or
color filter (optional)



soft edge glass,
satinised glass or
color filter (optional)



Lens



Version D



Diffusor glass



color filter
(optional)

soft edge glass,
satinised glass or
color filter (optional)



Lens

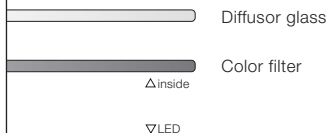


Version E

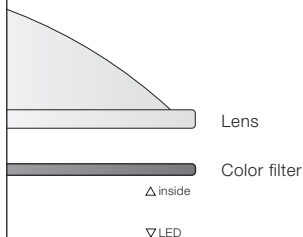


Assembling the head (inserts)

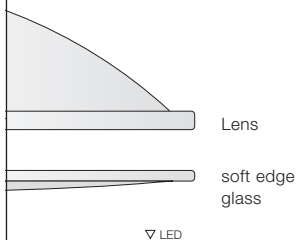
Color filter/diffusor glass



Color filter/lens



Soft edge glass / lens

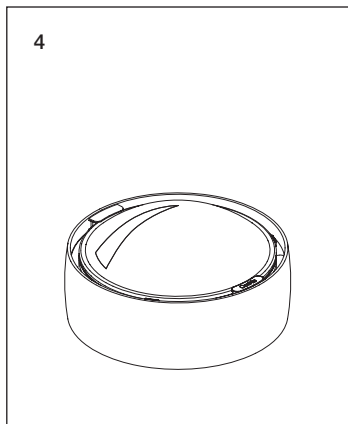
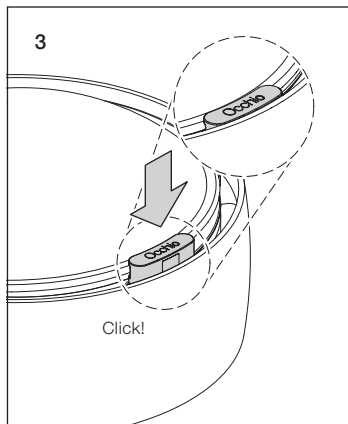
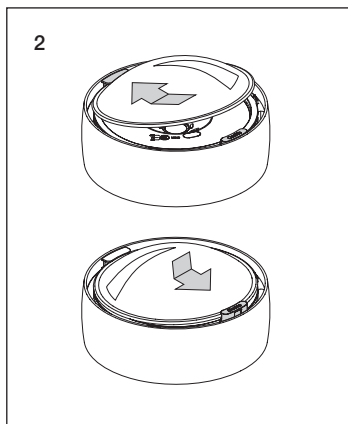
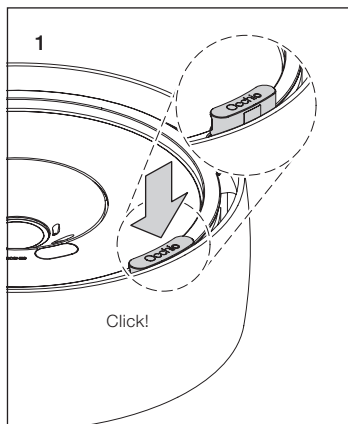


Caution: When used for prolonged periods, the surface of the spotlight can become hot. Before performing any work on the spotlight, always switch it off and allow it to cool down for at least 30 minutes.

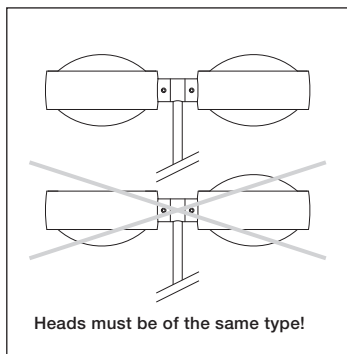
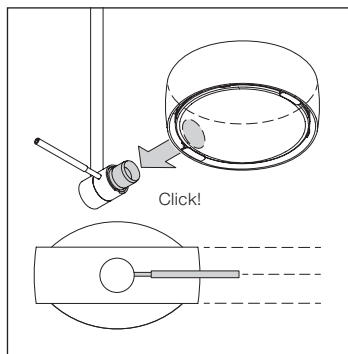


Caution: Do not look directly into the LED when it is on. This may cause an after-image effect and may result in damage to the eyes if you look at the light directly for prolonged periods. Do not touch the LED. It may be damaged as a result.

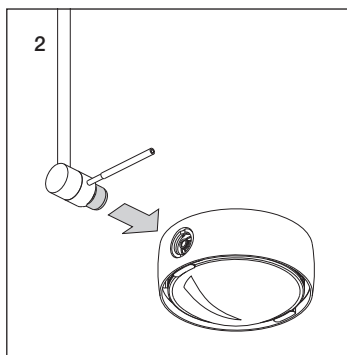
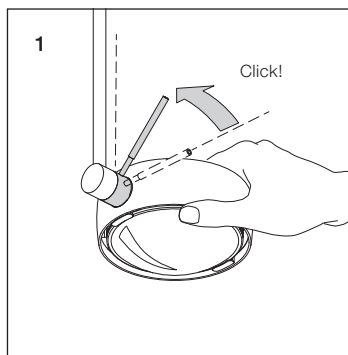
Assembling the head (inserts)



Assembling the head and body

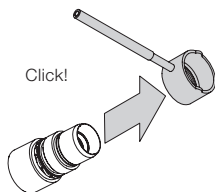


Removing the head

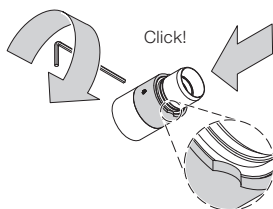


Fitting the fixing ring (optional / accessory)

1

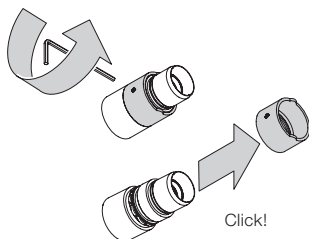


2

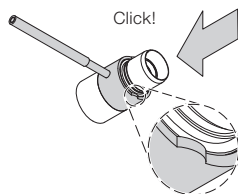


Fitting the carbon rod

1









2



Technical data

Technical data head

Product designation	Occhio Sento head double-sided
Dimensions	ø 123 mm, H 42 mm (without lens)
Safety class	3
Supply voltage	48 V DC, min. 22 W for 18 W head, min. 30 W for 26 W head
Power supply unit	external
Dimming	using the head / suitable power supply unit
Materials luminaire	Aluminium, chrome-plated, painted or anodised steel, plastic
Materials inserts	Glass, optical plastic
LED power	18 W / 26 W depending on the head
Permitted operating conditions	max. 30°C, for indoor use only
Test symbols	IP 20      

Technical data LED

Light source	Occhio LED
Version	LED chip (replaceable)
Life time	> 50,000 h
Energy efficiency class – EEK	A + + / A +

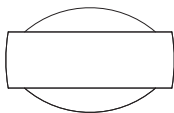
Disposal

Dispose of at the local waste disposal site. The power supply unit and the head are recyclable and RoHS-compliant. **Do not dispose of with household waste.**

Occhio

Sento head double-sided

Operating instructions

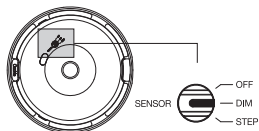




touchless control
up/down fading



Setting the head to DIM



OFF Switch and dim externally

DIM »touchless control«

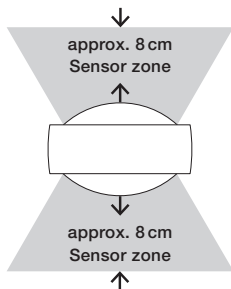
»touchless fading«

Touchless control

STEP »up / down preset«

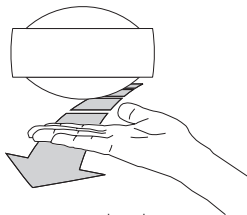
Presets the lighting conditions of the up- / downlight

Switch and dim externally

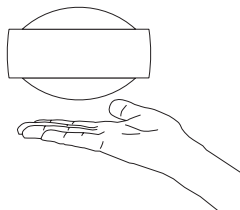
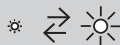


»touchless control« operation

ON / OFF

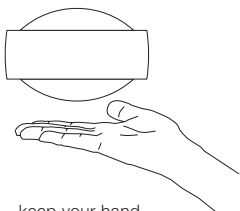


move your hand



keep your hand still

»touchless fading« operation



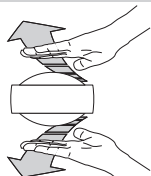
keep your hand
still for a time



Moves the maximum brightness
to one side of the light output

Coupling / decoupling the up- and downlight

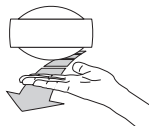
(de)coupling



move hands
simultaneously

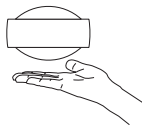
The luminaire flashes
to confirm

ON / OFF



move your hand

Switches both sides
on/off at the same time



keep your hand still

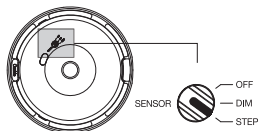
Dims both sides
at the same time



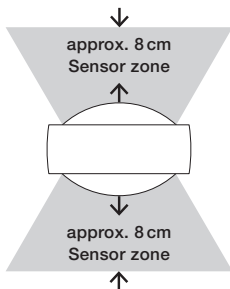
up / down
preset



Setting the head to STEP

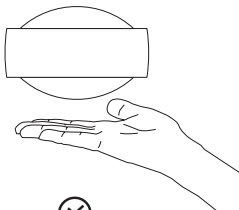


- OFF** Switch and dim externally
- DIM** »touchless control«
»touchless fading«
Touchless control
- STEP** »up / down preset«
Presets the lighting conditions
of the up-/downlight
Switch and dim externally



Setting and saving STEP “up/down preset”

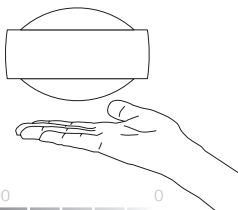
1



Hold for 10 seconds

Luminaire is unlocked
and flashes to confirm

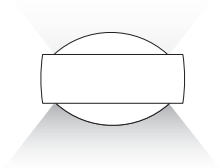
2



keep your hand still for a time

Sets the lighting conditions in 5 stages

3

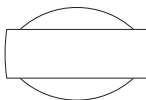


Wait for 5 minutes or
switch on/off at the mains

The setting is now saved

4

ON / OFF – DIM



Switch/
dimmer*

Switching and dimming

The saved setting for the luminaire
remains unchanged

* Dimming only with Occhio converter