

J.J.W.

10-09-2015

02

QA60 max. 53W | E27 | 220-240VAC | 50-60Hz

CE IP20 960°C 1,0,9m

silver / grey
gold

2055E8S0
2055E8G0

OPTIONAL

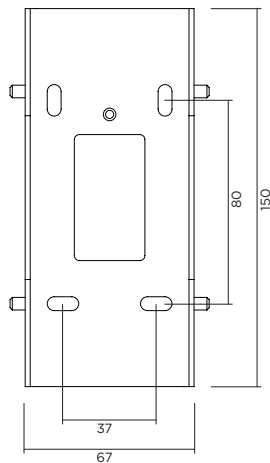
QA60 LED E27 6W 2200K 400lm

9003E109

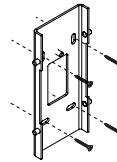
QA60 LED E27 6W 2700K 650lm

9003E108

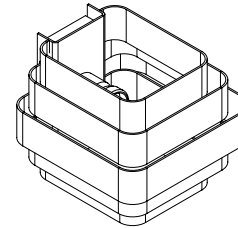
back plate dimensions



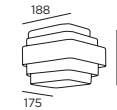
①



③



DIMENSIONS



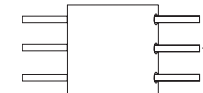
MOUNTING INSTRUCTION

- ① Remove the back plate and mount it on the wall with screws.

POWER CONNECTION

- ② Connect the power supply.

Interior: STANDARD version



- ③ Mount the fixture to the back plate
- ④ Insert the lamp (lamp is not included)



WEVER & DUCRÉ
LIGHTING

www.weverducre.com

INSTALLATION INSTRUCTIONS